



2 Kitcheners Lane  
, Walkern, SG2 7PF

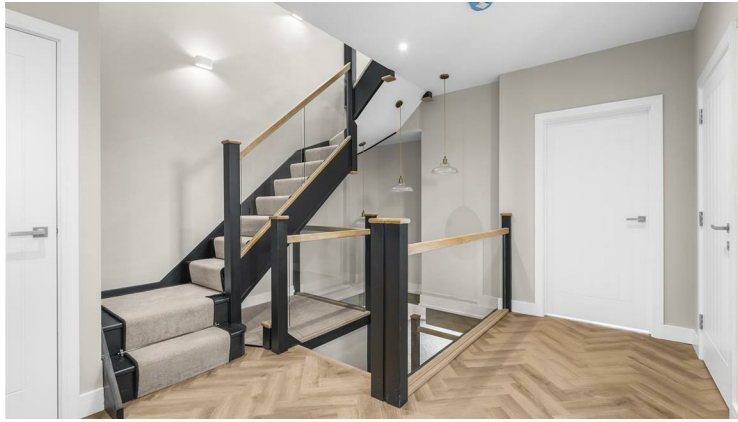
Offers over £1,250,000



## 2 Kitcheners Lane, Walkern, SG2 7PF

Greenhill Estates are delighted to present this 2,635 sq ft brand-new 4 bedroom, three bathroom, detached residence situated in the highly desirable Walkern area.

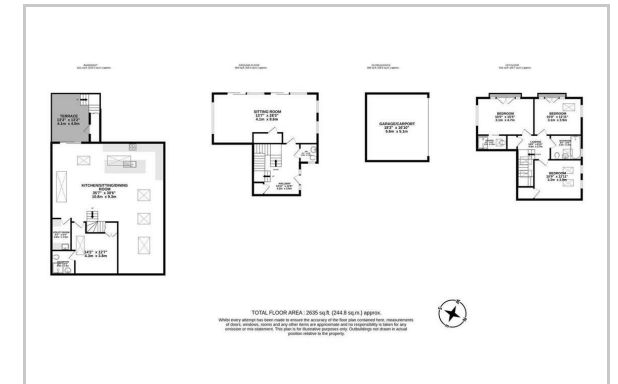
Architecturally striking and finished to an exacting eco friendly standard with underfloor heating and an air source heat pump, this contemporary home offers a rare blend of village charm and high-specification modern living. The property is intelligently designed and spread across three levels, including a substantial lower ground floor, providing a versatile and expansive living environment. The exterior features a sophisticated mix of dark anthracite cladding and traditional brickwork, set behind an elegant wrought-iron boundary that leads to a private gravel driveway and a detached double carport.



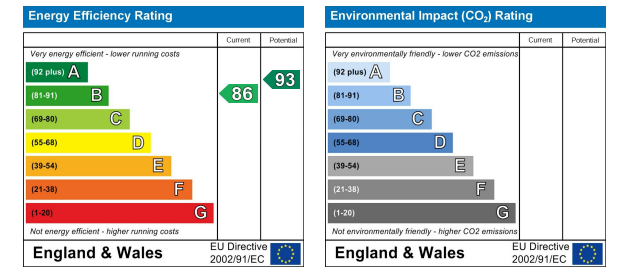
## Area Map



## Floor Plan



## Energy Efficiency Graph



These particulars, whilst believed to be accurate are set out as a general outline only for guidance and do not constitute any part of an offer or contract. Intending purchasers should not rely on them as statements of representation of fact, but must satisfy themselves by inspection or otherwise as to their accuracy. No person in this firm's employment has the authority to make or give any representation or warranty in respect of the property.

Sopers House Sopers Road, Cuffley, EN6 4RY

Tel: 01707 802001 Email: sales@greenhillestates.co.uk <https://www.greenhillestates.co.uk>